

School Street Camera and Sign Positioning Phase 2

Contents

Abbs Cross Academy and Arts College	2
Ardleigh Green Infant and junior School.....	3
Benhurst Primary School.....	4
Elm Park Primary School	5
Emerson Park Academy.....	6
Gaynes School.....	7
Gidea Park College	8
Gidea Park School	9
Hacton Primary School.....	10
Hall Mead Academy	11
Harris Academy.....	12
Hornchurch High School	13
La Salette Catholic Primary School	14
Langtons Infant and Junior.....	15
Newton's Primary School	16
Parklands Infant and Primary School	17
Raphael Independent School	18
Redden Court School.....	19
Rise Park Infant and Junior School	20
Sanders and Suttons Primary Schools.....	21
Scargill Infant and Junior School.....	22
Scotts Primary School.....	23
St Albans Catholic Primary School.....	24
St Joseph's Catholic Primary School.....	25
St Mary's Hare Park School and the Royal Liberty School.....	26
St Patrick's Catholic Primary School	27
The Brittons Academy and Whybridge Infant School	28
The RJ Mitchell Primary School	29
Whybridge Junior School	30

School Street Camera and Sign Positioning Phase 2

Abbs Cross Academy and Arts College



Item	Location	Junction with	Direction	Quantity
Camera	Abbs Cross Lane	Cedar Avenue	East facing	1
Camera	Suttons Avenue	Beulah Road	South facing	1
Entry / exit sign with time plate	Cedar Avenue	Abbs Cross Lane	West facing	2
Entry / exit sign with time plate	Beulah Road	Suttons Avenue	North facing	2
Pedestrian / cycle only sign with time plate	Cedar Avenue	Abbs Cross Lane	West facing	2
Pedestrian / cycle only sign with time plate	Beulah Road	Suttons Avenue	North facing	2

School Street Camera and Sign Positioning Phase 2

Ardleigh Green Infant and junior School



Item	Location	Junction with	Direction	Quantity
Camera	Ashlyn Grove	Helen Road	East facing	1
Camera	Ardleigh Green Road	Helen Road	West facing	1
Entry / exit sign with time plate	Helen Road	Ashlyn Grove	West facing	2
Entry / exit sign with time plate	Helen Road	Ardleigh Green Road	East facing	2
Pedestrian / cycle only sign with time plate	Helen Road	Ashlyn Grove	West facing	2
Pedestrian / cycle only sign with time plate	Helen Road	Ardleigh Green Road	East facing	2

School Street Camera and Sign Positioning Phase 2

Benhurst Primary School



Item	Location	Junction with	Direction	Quantity
Camera	Abbs Cross Lane	Warren Drive	West facing	1
Camera	Warren Drive	Eyhurst Avenue	East facing	1
Camera	Benhurst Avenue	Willow Close	East facing	1
Entry / exit sign with time plate	Warren Drive	Abbs Cross Lane	East facing	2
Entry / exit sign with time plate	Warren Drive	Eyhurst Avenue	West facing	2
Entry / exit sign with time plate	Benhurst Avenue	Willow Close	West facing	2
Pedestrian / cycle only sign with time plate	Warren Drive	Abbs Cross Lane	East facing	2
Pedestrian / cycle only sign with time plate	Warren Drive	Eyhurst Avenue	West facing	2
Pedestrian / cycle only sign with time plate	Benhurst Avenue	Willow Close	West facing	2

School Street Camera and Sign Positioning Phase 2

Elm Park Primary School



Item	Location	Junction with	Direction	Quantity
Camera	Maylands Avenue	Spring Gardens	East facing	1
Camera	Calbourne Avenue	Maylands Avenue	North facing	1
Entry / exit sign with time plate	Maylands Avenue	Spring Gardens	West facing	2
Entry / exit sign with time plate	Calbourne Avenue	Maylands Avenue	South facing	2
Pedestrian / cycle only sign with time plate	Maylands Avenue	Spring Gardens	West facing	2
Pedestrian / cycle only sign with time plate	Calbourne Avenue	Maylands Avenue	South facing	2

School Street Camera and Sign Positioning Phase 2

Emerson Park Academy



Item	Location	Junction with	Direction	Quantity
Camera	Parkstone Avenue	Wingletyre Lane	East facing	1
Entry / exit sign with time plate	Wych Elm Road	Wingletyre Lane	West facing	2
Pedestrian / cycle only sign with time plate	Wych Elm Road	Wingletyre Lane	West facing	2

School Street Camera and Sign Positioning Phase 2

Gaynes School



Item	Location	Junction with	Direction	Quantity
Camera	Brackensdale Gardens	Cranston Park Avenue	South facing	1
Entry / exit sign with time plate	Brackensdale Gardens	Cranston Park Avenue	North facing	2
Pedestrian / cycle only sign with time plate	Brackensdale Gardens	Cranston Park Avenue	North facing	2

School Street Camera and Sign Positioning Phase 2

Gidea Park College



Item	Location	Junction with	Direction	Quantity
Camera	Balgores Lane	Tudor Avenue	West facing	1
Camera	Tudor Avenue	Repton Gardens	East facing	1
Entry / exit sign with time plate	Tudor Avenue	Balgores Lane	East facing	2
Entry / exit sign with time plate	Tudor Avenue	Repton Gardens	West facing	2
Pedestrian / cycle only sign with time plate	Tudor Avenue	Balgores Lane	East facing	2
Pedestrian / cycle only sign with time plate	Tudor Avenue	Repton Gardens	West facing	2

School Street Camera and Sign Positioning Phase 2

Gidea Park School



Item	Location	Junction with	Direction	Quantity
Camera	Main Road	Lodge Avenue	South East facing	1
Camera	Lodge Avenue	The Ridgeway	North West facing	1
Camera	Tudor Avenue	Repton Avenue	South West facing	1
Camera	Tudor Drive	St Ivians Drive	North West facing	1
Entry / exit sign with time plate	Lodge Avenue	Main Road	North West facing	2
Entry / exit sign with time plate	Lodge Avenue	The Ridgeway	South East facing	2
Entry / exit sign with time plate	Tudor Avenue	Repton Avenue	South West facing	2
Entry / exit sign with time plate	Tudor Drive	St Ivians Drive	North West facing	2
Pedestrian / cycle only sign with time plate	Lodge Avenue	Main Road	North West facing	2
Pedestrian / cycle only sign with time plate	Lodge Avenue	The Ridgeway	South East facing	2
Pedestrian / cycle only sign with time plate	Tudor Avenue	Repton Avenue	South West facing	2

School Street Camera and Sign Positioning Phase 2

Pedestrian / cycle only sign with time plate	Tudor Drive	St Ivians Drive	North West facing	2
--	-------------	-----------------	-------------------	---

Hacton Primary School



Item	Location	Junction with	Direction	Quantity
Camera	Chepstow Avenue	Central Drive	South facing	1
Entry / exit sign with time plate	Chepstow Avenue	Central Drive	North facing	2
Pedestrian / cycle only sign with time plate	Chepstow Avenue	Central Drive	North facing	2

School Street Camera and Sign Positioning Phase 2

Hall Mead Academy



Item	Location	Junction with	Direction	Quantity
Camera	Marlborough Gardens	Dorkins Way	South facing	1
Camera	Ingreboune Gardens	Marlborough Gardens	North facing	1
Entry / exit sign with time plate	Marlborough Gardens	Dorkins Way	North facing	2
Entry / exit sign with time plate	Marlborough Gardens	Ingreboune Gardens	South facing	2
Pedestrian / cycle only sign with time plate	Marlborough Gardens	Dorkins Way	North facing	2
Pedestrian / cycle only sign with time plate	Marlborough Gardens	Ingreboune Gardens	South facing	2

School Street Camera and Sign Positioning Phase 2

Harris Academy



Item	Location	Junction with	Direction	Quantity
Camera	Wennington Road	Brookway	North East facing	1
Camera	Deri Avenue	Lambs Lane	South East facing	1
Camera	Lambs Lane	The Glen	South West facing	1
Entry / exit sign with time plate	Lambs Lane	Wennington Road	South West facing	2
Entry / exit sign with time plate	Lambs Lane	Deri Avenue	North West facing	2
Entry / exit sign with time plate	Lambs Lane	The Glen	North East facing	2
Pedestrian / cycle only sign with time plate	Lambs Lane	Wennington Road	South West facing	2
Pedestrian / cycle only sign with time plate	Lambs Lane	Deri Avenue	North West facing	2
Pedestrian / cycle only sign with time plate	Lambs Lane	The Glen	North East facing	2

School Street Camera and Sign Positioning Phase 2

Hornchurch High School



Item	Location	Junction with	Direction	Quantity
Camera	Broadstone Road	Number 41	East facing	1
Entry / exit sign with time plate	Broadstone Road	Number 41	West facing	2
Pedestrian / cycle only sign with time plate	Broadstone Road	Number 41	West facing	2

School Street Camera and Sign Positioning Phase 2

La Salette Catholic Primary School



Item	Location	Junction with	Direction	Quantity
Camera	Dunedin Road	Osbourne Gardens	East facing	1
Camera	New Zealand Way	Dunedin Road	South facing	1
Entry / exit sign with time plate	Dunedin Road	Osbourne Gardens	West facing	2
Entry / exit sign with time plate	Dunedin Road	New Zealand Way	North facing	2
Pedestrian / cycle only sign with time plate	Dunedin Road	Osbourne Gardens	West facing	2
Pedestrian / cycle only sign with time plate	Dunedin Road	New Zealand Way	North facing	2

School Street Camera and Sign Positioning Phase 2

Langtons Infant and Junior



Westland medical centre's entrance is in the middle of the Westland Avenue behind existing school entrance markings, and doesn't appear to have off street parking.

Item	Location	Junction with	Direction	Quantity
Camera	North Street	Westland Avenue	East facing	1
Camera	Westland Avenue	Bowden Drive	West facing	1
Entry / exit sign with time plate	Westland Avenue	North Street	West facing	2
Entry / exit sign with time plate	Westland Avenue	Bowden Drive	East facing	2
Pedestrian / cycle only sign with time plate	Westland Avenue	North Street	West facing	2
Pedestrian / cycle only sign with time plate	Westland Avenue	Bowden Drive	East facing	2

School Street Camera and Sign Positioning Phase 2

Newton's Primary School



This scheme will require a site visit to confirm the positioning of the back entrance in Walden Avenue as this site has been regenerated.

Item	Location	Junction with	Direction	Quantity
Camera	Walden Avenue	Apple Tree Lane	North facing	1
Camera	New Road	Askwith Road	North facing	1
Camera	Frederick Road	Askwith Road	South facing	1
Entry / exit sign with time plate	Walden Avenue	Apple Tree Lane	South facing	2
Entry / exit sign with time plate	New Road	Askwith Road	South facing	2
Entry / exit sign with time plate	Frederick Road	Askwith Road	North facing	2
Pedestrian / cycle only sign with time plate	Walden Avenue	Apple Tree Lane	South facing	2
Pedestrian / cycle only sign with time plate	New Road	Askwith Road	South facing	2
Pedestrian / cycle only sign with time plate	Frederick Road	Askwith Road	North facing	2

School Street Camera and Sign Positioning Phase 2

Parklands Infant and Primary School



Item	Location	Junction with	Direction	Quantity
Camera	Priests Avenue	Ashmore Gardens	South West facing	1
Entry / exit sign with time plate	Hamilton Avenue	Ashmore Gardens	North East facing	2
Pedestrian / cycle only sign with time plate	Hamilton Avenue	Ashmore Gardens	North East facing	2

School Street Camera and Sign Positioning Phase 2

Raphael Independent School



Item	Location	Junction with	Direction	Quantity
Camera	Globe Road	Clifton Road	South West facing	1
Camera	Park Lane	Clifton Road	North East facing	1
Entry / exit sign with time plate	Clifton Road	Globe Road	North West facing	2
Entry / exit sign with time plate	Clifton Road	Park Lane	South West facing	2
Pedestrian / cycle only sign with time plate	Clifton Road	Globe Road	North West facing	2
Pedestrian / cycle only sign with time plate	Clifton Road	Park Lane	South West facing	2

School Street Camera and Sign Positioning Phase 2

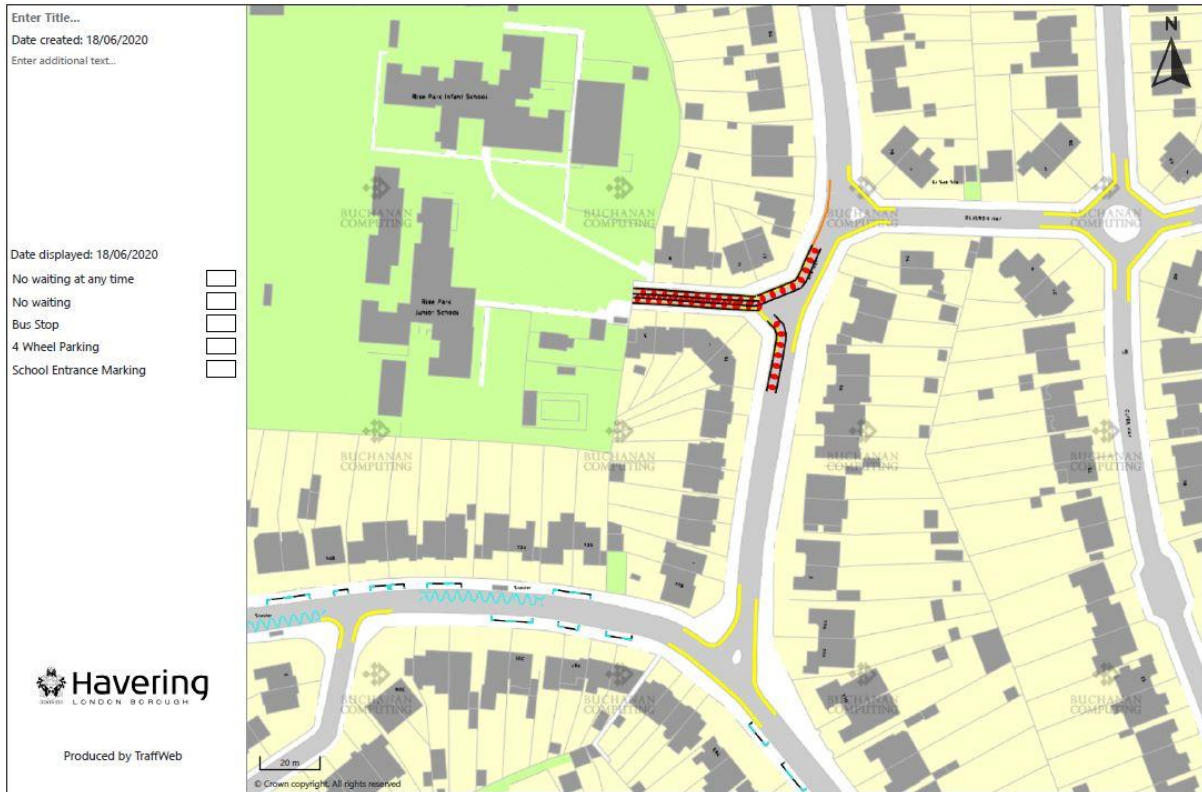
Redden Court School



Item	Location	Junction with	Direction	Quantity
Camera	Cotswold Road	Upland Court Road	South East facing	1
Entry / exit sign with time plate	Cotswold Road	Upland Court Road	North West facing	2
Pedestrian / cycle only sign with time plate	Cotswold Road	Upland Court Road	North West facing	2

School Street Camera and Sign Positioning Phase 2

Rise Park Infant and Junior School



Item	Location	Junction with	Direction	Quantity
Camera	Petits Lane North	Ayr Way	North facing	1
Camera	Ayr Way	Deveron Way	South facing	1
Entry / exit sign with time plate	Ayr Way	Petits Lane North	South facing	2
Entry / exit sign with time plate	Ayr Way	Deveron Way	North facing	2
Pedestrian / cycle only sign with time plate	Ayr Way	Petits Lane North	South facing	2
Pedestrian / cycle only sign with time plate	Ayr Way	Deveron Way	North facing	2

School Street Camera and Sign Positioning Phase 2

Sanders and Suttons Primary Schools



Item	Location	Junction with	Direction	Quantity
Camera	Ilfracombe Crescent	Inglewood Close	East facing	1
Entry / exit sign with time plate	Inglewood Close	Ilfracombe Crescent	West facing	2
Pedestrian / cycle only sign with time plate	Inglewood Close	Ilfracombe Crescent	West facing	2

School Street Camera and Sign Positioning Phase 2

Scargill Infant and Junior School



Item	Location	Junction with	Direction	Quantity
Camera	Sowrey Avenue	Stephen Avenue	South East facing	1
Camera	Simpson Road	Ryder Gardens	East facing	1
Camera	Mungo Park Road	Simpson Road	West facing	1
Entry / exit sign with time plate	Sowrey Avenue	Stephen Avenue	North West facing	2
Entry / exit sign with time plate	Simpson Road	Ryder Gardens	West facing	2
Entry / exit sign with time plate	Mungo Park Road	Simpson Road	East facing	2
Entry / exit sign with time plate	Simpson Road	No.63 Simpson Road	North facing	2
Pedestrian / cycle only sign with time plate	Sowrey Avenue	Stephen Avenue	North West facing	2
Pedestrian / cycle only sign with time plate	Simpson Road	Ryder Gardens	West facing	2
Pedestrian / cycle only sign with time plate	Mungo Park Road	Simpson Road	East facing	2

School Street Camera and Sign Positioning Phase 2

Pedestrian / cycle only sign with time plate	Simpson Road	No.63 Simpson Road	North facing	2
--	--------------	--------------------	--------------	---

Scotts Primary School



Item	Location	Junction with	Direction	Quantity
Camera	Swanbourne Drive	Bonnington Road	South West facing	1
Camera	Maybank Avenue	Rosebank Avenue	South East facing	1
Entry / exit sign with time plate	Bonnington Road	Swanbourne Drive	North East facing	2
Entry / exit sign with time plate	Maybank Avenue	Rosebank Avenue	North West facing	2
Pedestrian / cycle only sign with time plate	Bonnington Road	Swanbourne Drive	North East facing	2
Pedestrian / cycle only sign with time plate	Maybank Avenue	Rosebank Avenue	North West facing	2

School Street Camera and Sign Positioning Phase 2

St Albans Catholic Primary School



Item	Location	Junction with	Direction	Quantity
Camera	Heron Flight Avenue	No.23 Heron Flight Avenue	South East facing	1
Entry / exit sign with time plate	Heron Flight Avenue	No.23 Heron Flight Avenue	North West facing	2
Pedestrian / cycle only sign with time plate	Heron Flight Avenue	No.23 Heron Flight Avenue	North West facing	2

School Street Camera and Sign Positioning Phase 2

St Joseph's Catholic Primary School

Enter Title...
 Date created: 18/06/2020
 Enter additional text...

Date displayed: 18/06/2020



Produced by TraffWeb



Item	Location	Junction with	Direction	Quantity
Camera	Champion Road	Gaynes Road	South West facing	1
Entry / exit sign with time plate	Champion Road	Gaynes Road	North West facing	2
Pedestrian / cycle only sign with time plate	Champion Road	Gaynes Road	North West facing	2

School Street Camera and Sign Positioning Phase 2

St Mary's Hare Park School and the Royal Liberty School



Item	Location	Junction with	Direction	Quantity
Camera	Upper Brentwood Road	South Drive	North West facing	1
Camera	Pemberton Avenue	Hall Road	North East facing	1
Entry / exit sign with time plate	South Drive	Upper Brentwood Road	South East facing	2
Entry / exit sign with time plate	Hall Road	Pemberton Avenue	South West facing	2
Pedestrian / cycle only sign with time plate	South Drive	Upper Brentwood Road	South East facing	2
Pedestrian / cycle only sign with time plate	Hall Road	Pemberton Avenue	South West facing	2

School Street Camera and Sign Positioning Phase 2

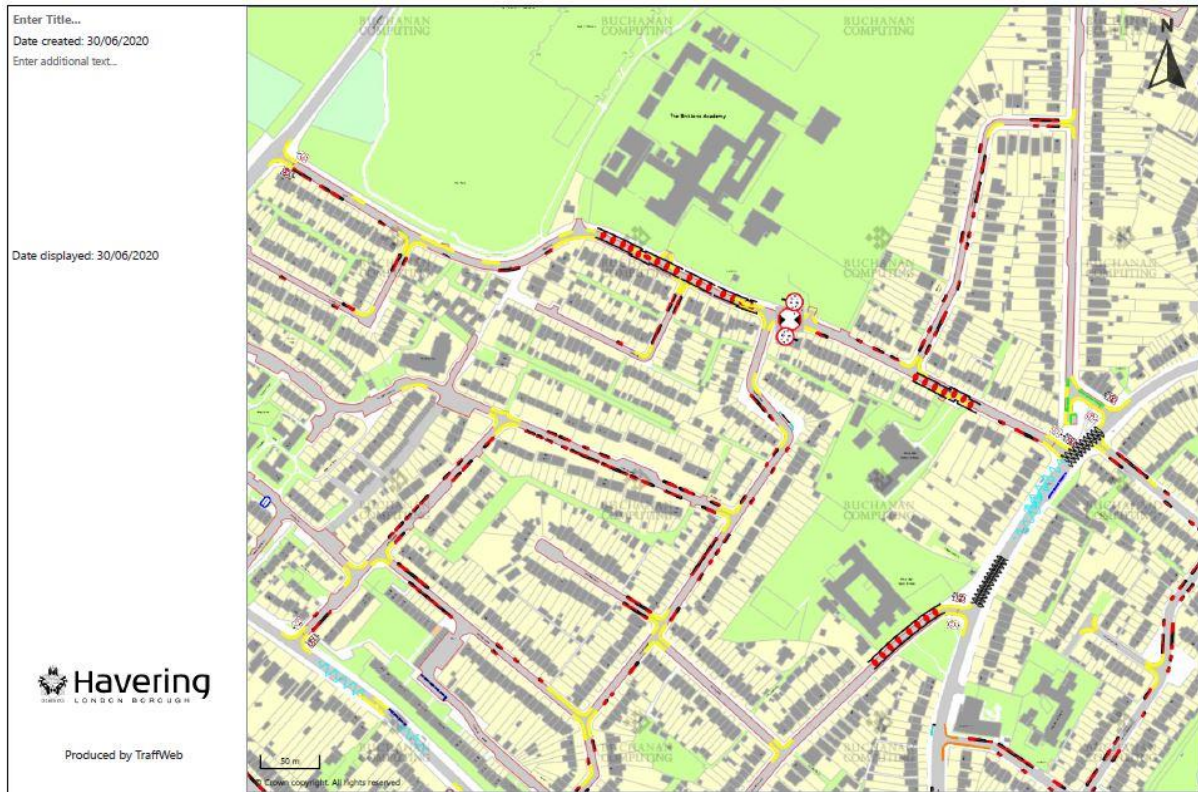
St Patrick's Catholic Primary School



Item	Location	Junction with	Direction	Quantity
Camera	Lowshoe Lane	Hood Walk	West facing	1
Camera	Lowshoe Lane	Rodney Way	East facing	1
Entry / exit sign with time plate	Lowshoe Lane	Hood Walk	East facing	2
Entry / exit sign with time plate	Lowshoe Lane	Rodney Way	West facing	2
Pedestrian / cycle only sign with time plate	Lowshoe Lane	Hood Walk	East facing	2
Pedestrian / cycle only sign with time plate	Lowshoe Lane	Rodney Way	West facing	2

School Street Camera and Sign Positioning Phase 2

The Brittons Academy and Whybridge Infant School



Item	Location	Junction with	Direction	Quantity
Camera	Rainham Road	Ford Lane	South East facing	1
Camera	Harlow Road	Fyfield Road	North East facing	1
Camera	South End Road	Ford Lane	North West facing	1
Entry / exit sign with time plate	Ford Lane	Rainham Road	North East facing	2
Entry / exit sign with time plate	Harlow Road	Fyfield Road	South West facing	2
Entry / exit sign with time plate	Ford Lane	South End Road	South East facing	2
Pedestrian / cycle only sign with time plate	Ford Lane	Rainham Road	North East facing	2
Pedestrian / cycle only sign with time plate	Harlow Road	Fyfield Road	South West facing	2
Pedestrian / cycle only sign with time plate	Ford Lane	South End Road	South East facing	2

School Street Camera and Sign Positioning Phase 2

The RJ Mitchell Primary School



Item	Location	Junction with	Direction	Quantity
Camera	Airfield Way North	Tangmere Crescent	North West facing	1
Camera	Airfield Way South	Tangmere Crescent	North West facing	1
Entry / exit sign with time plate	Tangmere Crescent	Airfield Way North	South East facing	2
Entry / exit sign with time plate	Tangmere Crescent	Airfield Way South	South East facing	2
Pedestrian / cycle only sign with time plate	Tangmere Crescent	Airfield Way North	South East facing	2
Pedestrian / cycle only sign with time plate	Tangmere Crescent	Airfield Way South	South East facing	2

School Street Camera and Sign Positioning Phase 2

Whybridge Junior School



Item	Location	Junction with	Direction	Quantity
Camera	Southend Road	Blacksmiths Lane	North West facing	1
Camera	Blacksmiths Lane	Oliver Road	North East facing	1
Entry / exit sign with time plate	Blacksmiths Lane	Southend Road	South East facing	2
Entry / exit sign with time plate	Blacksmiths Lane	Oliver Road	South West facing	2
Pedestrian / cycle only sign with time plate	Blacksmiths Lane	Southend Road	South East facing	2
Pedestrian / cycle only sign with time plate	Blacksmiths Lane	Oliver Road	South West facing	2